



elocky

• open your future •



Assembly instructions

Version française



Versión española

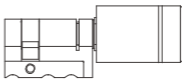


Summary

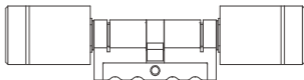
| | |
|----------------------------|----|
| Contents | 6 |
| European Cylinder | 6 |
| Swiss Cylinder | 6 |
| Accessories | 7 |
| Options | 7 |
| Preparation | 8 |
| Installation | 12 |
| Maintenance | 17 |
| Changing the battery | 17 |
| Emergency Opening | 18 |

European Cylinder*

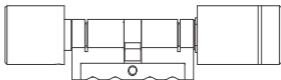
Half



Double

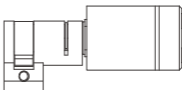


Simple

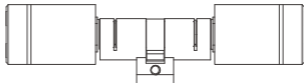


Swiss Cylinder*

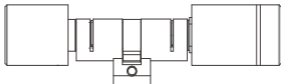
Half



Double



Simple



Accessories



**Mounting
card**



**Retaining
screws**



Fork spanner

Options

The box may also contain other items depending on the options chosen at the time of purchase:



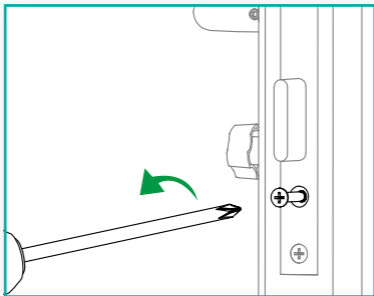
NFC badges



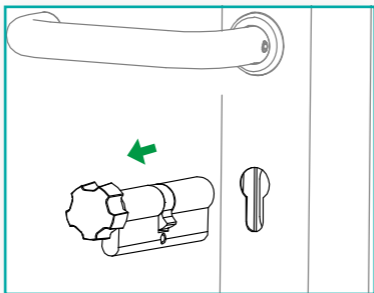
Electrokey (eKy)

Preparation

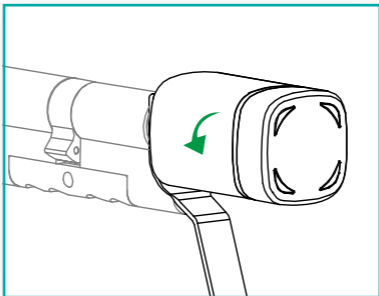
- 1 Loosen and remove the screw



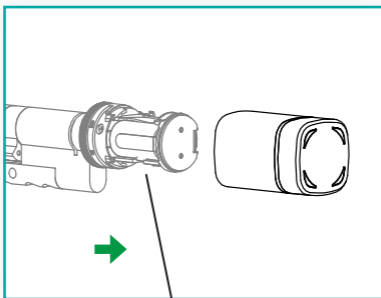
- 2 Remove the old cylinder after slightly turning the key or button.



3 Loosen the locking ring



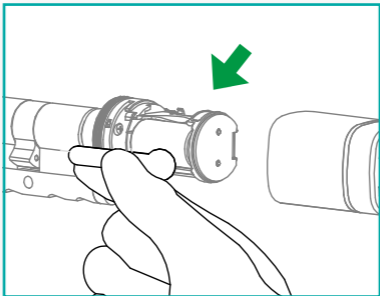
4 Remove the cover of the electronic button



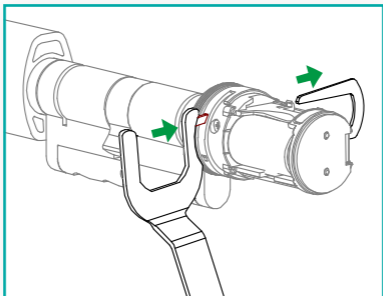
Electronic button

Preparation

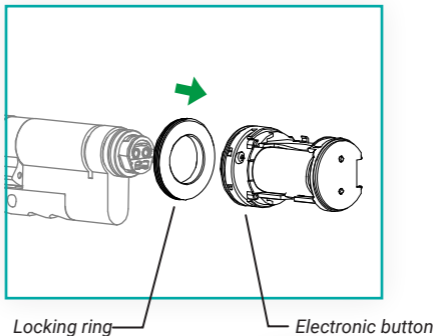
5 Remove the battery cover



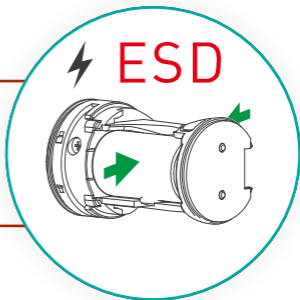
6 Push in the retaining clip



- 7 Pull out the electronic button and locking ring

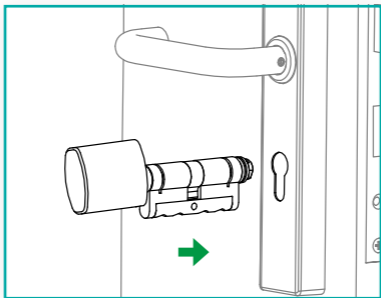


Watch out!
**Hold the button
by the battery** and
the opposite cover
plate.

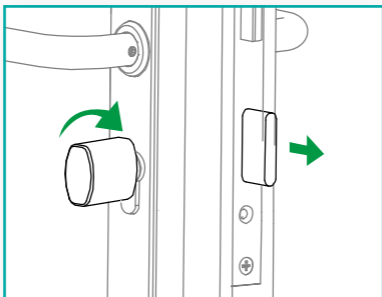


Installation

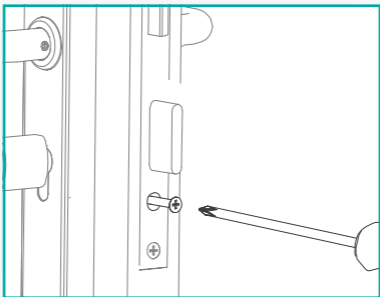
- 1 Position the cylinder in the lock body.



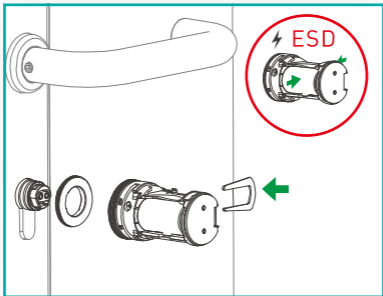
- 2 Turn the inner button to operate the deadbolt.



3 Install the fixing screw

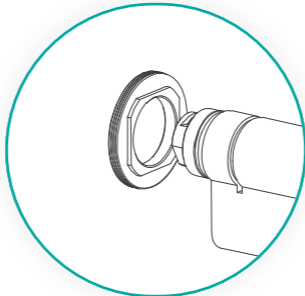


4 Install the locking ring, the electronic button and insert the retaining clip (see next page).

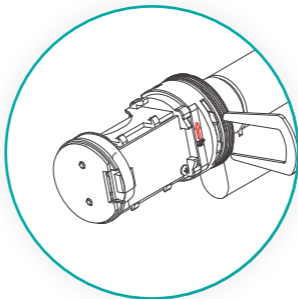


Installation

Cut edges of the locking ring facing outwards, facing the door

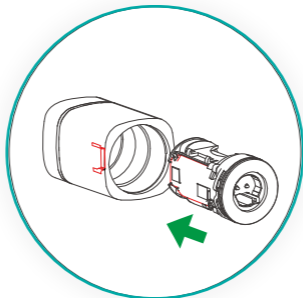


Align the arrow and the wide end of the retaining clip upwards.

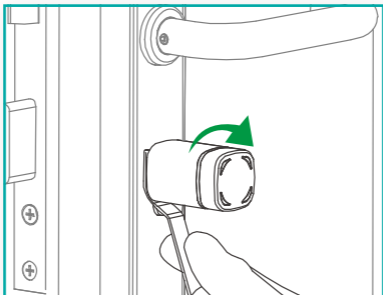


Installation

Align the electronic protection plate with the inner boss of the cover of the electronic button.

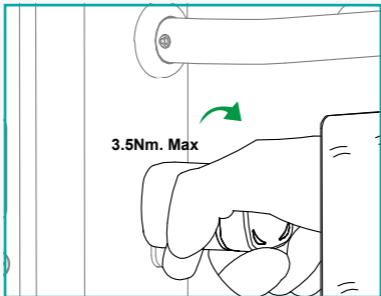


- 5 Install the external button cover and secure it with the locking ring.



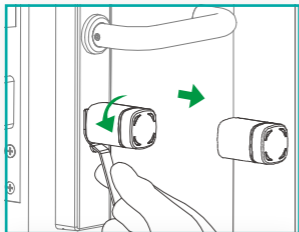
Installation

- 6 The mounting card is used to test operation.

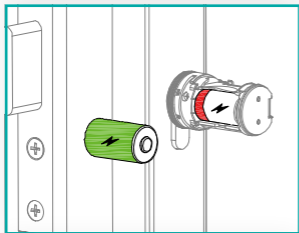


NOTE : If it is a double cylinder, repeat the installation, registration and test opening procedure on the other side of the cylinder.

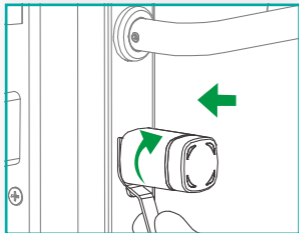
Changing the battery



- 1** Loosen the locking ring and remove the cover of the electronic button.

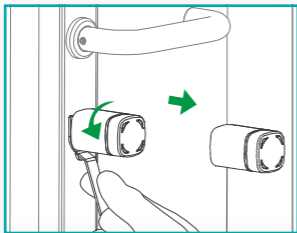


- 2** Replace with a new CR2 battery

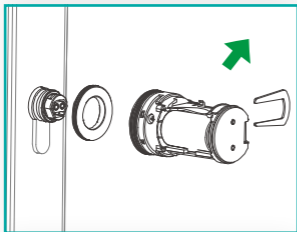


- 3** Install the button cover and secure the locking ring

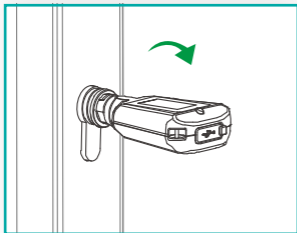
Emergency opening



- 1** Loosen the locking ring and remove the cover of the electronic button.



- 2** Removing the clip and electronic button



- 3** Opening with the electrokey, via the mobile application

FAQ



